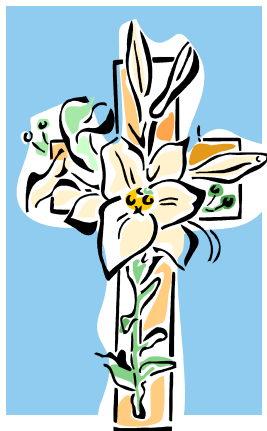


# The Messenger

Blue Ridge Boulevard Christian Church

March 2017



The journey to Easter is a journey through the cross to resurrection. And resurrection – in the here and now sense – is the grace filled opportunity to be able to see new possibilities for our lives where there were no life-giving possibilities before. During this journey of Lent, we acknowledge pain and suffering, the inability to forgive, and the hurts that wound our hearts and weigh us down like boulders.

As we offer our brokenness to God, God receives our brokenness as an offering. Because God meets us where we are in this journey, healing and resurrection become possible. May we be Easter people this season – believing in and praying for new ways of living that are full of resurrection hope!

Peace, Pastor Sherry

## THANK YOU

BRBCC – We can't say enough to thank everyone for the prayers, cards, gifts, calls, support, time and love to our mom and us during these difficult months! We love you all and appreciate you! With love, Stephen, Chris, Craig and Shawn Gentry

## SUNSHINE SISTERS

Thank you for your support of our Spaghetti Dinner Fundraiser and Team Jesus donations!



## Table of Contents

- From the Pastor
- Thank You
- SunShine Sisters
- Chili Dinner
- Weekday Events
- Disciples Women
- Hospice 101
- Women's Retreat

Please email submissions to Jaime at [jaimebrbcc@att.net](mailto:jaimebrbcc@att.net).

## FINANCIAL UPDATE

Monthly Budget: \$3,600  
February Gifts: \$3,293.57  
Week of Compassion: \$85

## WORSHIP TEXTS

March 5 – Phil & Pam Morgan  
March 12 – Mark 14:1-11  
March 19 – Mark 14:22-42  
March 26 – Mark 14:43-72

## SAVE THE DATE



**RUMMAGE SALE**  
**Saturday, April 29<sup>th</sup>**  
Donation drop off begins  
Tuesday, April 18<sup>th</sup>



## **CHILI DINNER**

Saturday, March 11<sup>th</sup> from 11 AM – 2 PM

Help us continue this wonderful tradition as we reach out to our families, friends and neighborhood with warm hospitality. Tickets are \$5 for adults and \$3 for children (10 and under). Please see Mary Margaret Smith for opportunities to volunteer or donate ingredients!

## **WEEKDAY EVENTS**

Tuesdays in March at 11 AM – Bible Study and Prayer

We will meet in the parlor, enter the church at the main front doors. Come and join a small group as we learn more about how God's Word can shape our lives and empower us to live faithfully as followers of Christ.

Wednesdays at 10 AM – Exercise

We will meet in the fellowship hall, enter the church from the side doors off the parking lot. Come and join a small group as they engage in light aerobic exercise. For more information, talk with Jeri Watts or Reva Wilson.



## **DISCIPLES WOMEN**

Thursday, March 16<sup>th</sup> at 10 AM

Please invite a friend to come and join us for this time of fellowship. A potluck lunch will follow. You can park in the side parking lot and enter through the side door.

## **HOSPICE 101: Educating about the Common Myths of Hospice**

Tuesday, March 28<sup>th</sup> from 6-7:30 PM at Woods Chapel United Methodist Church

This program is put on by Shalom Hospice. Please see the flyer in the foyer for more info.

## **WOMEN'S RETREAT**

Ladies mark your calendars for Saturday, April 22 from 10 AM – 1 PM!

We will break for lunch at 11:30. Valerie is leading a fascinating, enlightening, and empowering group study on the documentary *Miss Representation*. We will be exploring how women are portrayed in the media and how this affects our lives. We will be working through discussion questions and relevant Biblical texts in exploration of this topic.

We look forward to seeing you there! ~Valerie

